



FONDATION D'ENTREPRISE **AREVA**

## ANNUAL REPORT 2013



**AREVA**  
forward-looking energy

# Promoting access to healthcare, education and culture



**Sylvie Poitrenaud**

Executive Director

“With seven years of continuous action in favor of the disadvantaged including young children, the Foundation’s 2013 program achieved some noteworthy results.

— Following two successful experiences in India and China, we are renewing the direction of a program in India that supports children and their families in major interrelated areas of their development: health, hygiene, nutrition and education.

— When the fight against illiteracy became a major national issue in France in 2013, the Foundation stepped up its involvement in preventing illiteracy for very young children and their parents, specifically by supporting the Actions Educatives Familiales program.

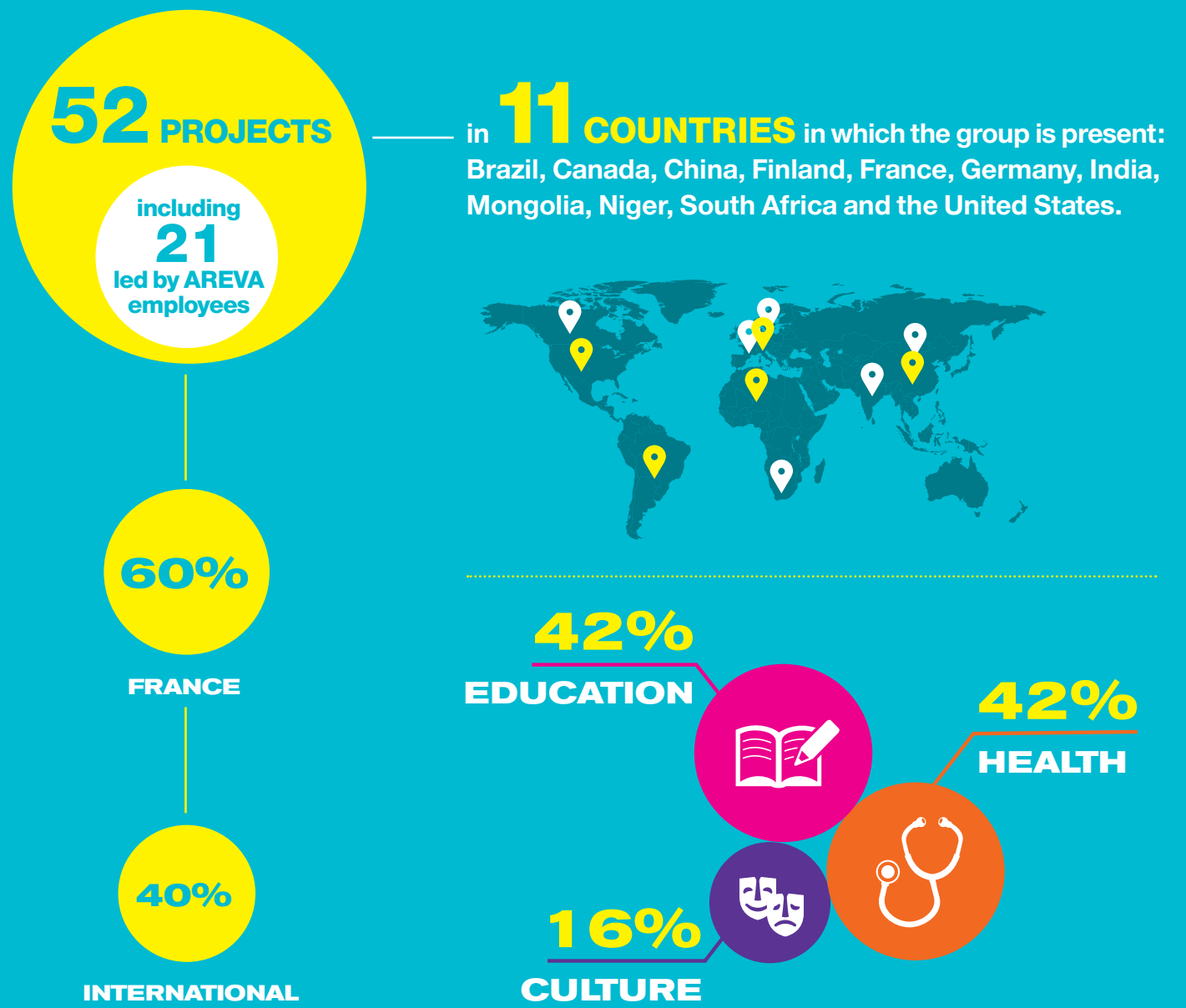
— In the vast field of cultural philanthropy, we are focusing on projects dedicated to members of the public with little access to cultural enrichment. These projects include a museum that organizes a roaming exhibition and a museum that trains social workers to guide new visitors.

— The Foundation is strongly supported by the personal involvement of the group’s employees in promoting access to healthcare, education and culture. By taking part in humanitarian missions or foot races worldwide and volunteering or responding to calls for internal projects, each person is helping to build better living conditions for the most vulnerable individuals.”

► Since 2007, the AREVA Corporate Foundation has supported small and large projects in the field. Watch this video to see the results.



In 2013, the AREVA Corporate Foundation continued to demonstrate its commitment to health, education and culture. The projects it has supported and monitored have primarily benefited children, women and students from disadvantaged backgrounds.



## Contents

<b>HEALTH</b>	<b>EDUCATION</b>	<b>CULTURE</b>	<b>EMPLOYEE INVOLVEMENT</b>
P.4	P.10	P.16	P.18

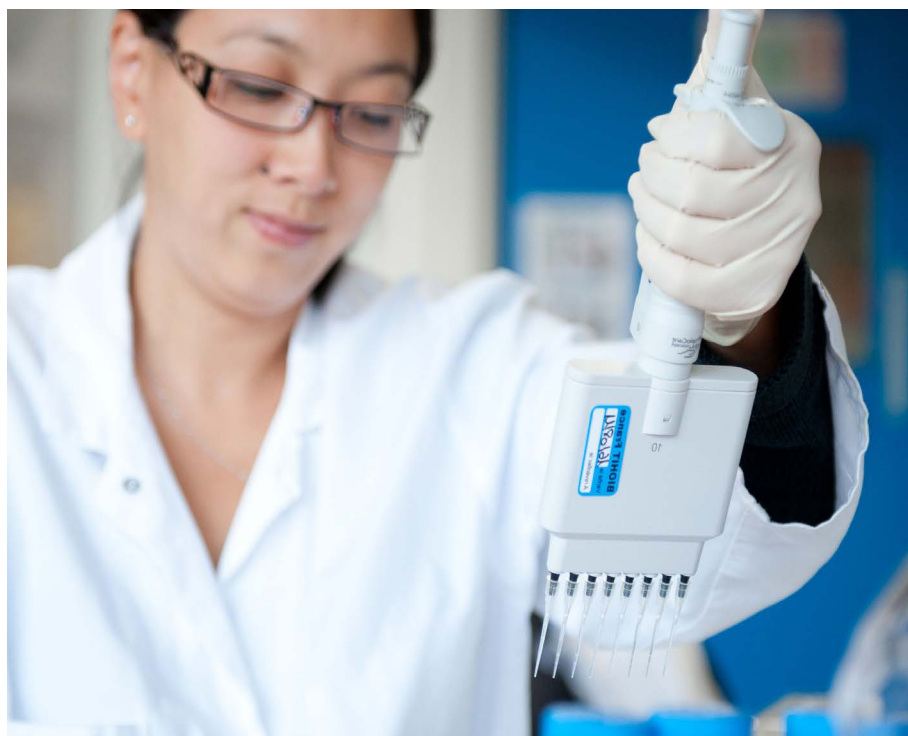


# Fighting AIDS and malaria

The AREVA Corporate Foundation sponsors research programs and actions in the field to assist people affected by these pandemics.

## Supporting research in France and Niger

In 2013, the AREVA Corporate Foundation renewed its partnership with the Institut Pasteur in France to continue an already intensive research program aimed at making significant progress in the fight against AIDS. This research program focuses on studying new aspects of viral multiplication and interactions between the virus and the organism.



Since 2012, the AREVA Corporate Foundation has also sponsored Institut Pasteur research on malaria in Niger. This research is carried out by the Centre de Recherche Médical et Sanitaire (CERMES). The program examines resistance to anti-malarial treatment and the genetic diversity of *Plasmodium falciparum*, one of the parasites that transmits the infection to humans. In addition, the program organizes malariology training courses at the national level for approximately 30 health workers.



“ We study how a healthy cell reacts when it encounters a cell infected with HIV. There are defenses that protect the healthy cell from infection. We’re examining the mechanisms that set up these defenses and the viral countermeasures that circumvent them. We’re also trying to understand how a small number of infected individuals manage to control HIV multiplication without treatment. Their immune systems activate normally—not too much, but just enough to keep the virus under control. Understanding the natural mechanisms that control the infection can lead to developing new therapeutic strategies.”

Olivier Schwartz  
Head of Institut Pasteur’s virus and immunity research unit (France)



“ All of the samples in the genetic diversity study have been analyzed and are being interpreted. For the study on resistance to different anti-malarial molecules, we had to use another sequencing method to be able to interpret the results. With the help of the University of Illinois with which we’re working on this aspect, the project should be completed by end 2014. Through the research carried out in 2013, the CERMES parasitology unit is doing its part to make necessary progress in the fight against the major global scourge that is malaria.”

Odile Ouwe  
CERMES Director (Niger)

# China: helping children and parents achieve self-sufficiency

In 2011, the AREVA Corporate Foundation renewed its partnership with the François-Xavier Bagnoud (FXB) association for a three-year period to develop a community village model in China's Bu Tuo county.

This includes a comprehensive assistance program involving health, nutrition, hygiene, education and economic support for 100 families living in poverty and with AIDS. The goals are to make gradual improvements in the many different aspects of child and adult well-being, and help guide families toward self-sufficiency. FXB relies on the county's medical teams to coordinate and deliver healthcare to families, especially children. FXB also dispenses HIV/AIDS screening tests and follows up on the appropriate medical treatment for people living with the disease. In 2013, more than 400 people took an HIV/AIDS screening test: 20 tested HIV positive and are now receiving triple therapy.

400

people took an HIV/AIDS screening test



“ To improve the quality of healthcare for villagers, FXB staff had to adapt to the Yi culture, which is strongly rooted in local customs. It's difficult to convince families to see a doctor rather than use traditional Yi medicine and a shaman. Trying to change mentalities is a long-term effort. After three years of continuous and personalized support to villagers, we're now starting to see changes.”

Frédérique Michaux  
AREVA employee in China and the Foundation's local contact person



## South Africa: assistance for children living with AIDS

The Secours populaire français association works with the Ekupholéni association to support children aged 4 to 18 who are infected with and affected by AIDS.

The program includes health, psychological and material support for families of orphans headed by teen-aged siblings in the Johannesburg suburbs. It also offers workshops in writing and theater.

In 2013, the AREVA Corporate Foundation provided the following:

- Medical, psychological, social and educational assistance as well as material and food aid to 70 orphans forced to become heads of family at a young age
- Access to professional training and technological university studies for these young people, thereby helping them secure work in the mechanical, automotive and plumbing industries or office administration. The program has benefited 115 youth.

70

teen-aged orphans received support

# Access to healthcare

The AREVA Corporate Foundation facilitates access to healthcare for the underprivileged and supports the families of hospitalized children.

## Bringing Nigerien children with serious heart disease to France for treatment

The Mécénat Chirurgie Cardiaque (MCC) association enables children aged 3 months to 15 years suffering from cardiac malformations to receive treatment in France when the technical and financial means to treat them in their own country are insufficient.

Since its creation in 1996, MCC has provided treatment to approximately 2,300 children from 75 countries. In 2012, the AREVA Corporate Foundation renewed its support to the association for a two-year period to fund operations in France for 6 Nigerien children. In May and September, these children were welcomed by their French host families. Fully recovered, they are now back with their families in Niger.



“ MCC owes its activities to an incredible solidarity chain that includes the host families, escorts, doctors, artists and athletes with whom we work, and of course, our donors. Thanks to all of this generosity, we can bring 20 children to France every month to save their lives.”

Francine Leca  
MCC Chairman

**10**  
traveling  
healthcare  
centers for rural  
populations  
in the Arlit  
and Ifrouane  
districts

## Niger: preventing maternal mortality

Despite efforts in the areas of extending health coverage, equipment and staff training in Niger, the country's maternal mortality rate has not diminished in recent years.

The Association to Promote Public Health took this observation to heart, launching a program dedicated to providing gynecological consultations in 2013 for the rural populations in the Arlit and Ifrouane districts. The AREVA Corporate Foundation joined this initiative to bolster local healthcare personnel's proficiency in gynecology, raise awareness on the issues associated with delayed care for expectant mothers, and treat gynecological and obstetrical diseases. Each traveling campaign of gynecological consultations makes the rounds at 10 rural healthcare centers over a 15-day period. The first one took place in September 2013, and the second in February 2014.



# France: bringing smiles to hospitalized children

In France, one of two children is hospitalized at least once before the age of 15. Regardless of a patient's age, hospitalization is often an ordeal. Children, in particular, can lose their carefree attitude when deprived of their family environment and emotional support system.



**Two associations – Docteur Clown and Théodora –** aim to help children and their families relax, deal with their illness, and forget the hospital to some extent. The AREVA Corporate Foundation has been sponsoring these associations for several years, enabling specially trained clowns to bring a smile to the faces of children in pediatric wards. The clowns improvise with each child, without imposing or staging a performance: they simply try to help each child escape from the world of their illness for a while. Parents and healthcare personnel are also invited to take part in the interaction.

In 2013, the AREVA Corporate Foundation contributed to more than 100 “Doctor Dream” visits to 1,200 children in the intensive-care and orthopedic and maxillofacial surgery wards at the Robert Debré Hospital in Paris. It has also sponsored nearly 50 “Doctor Clown” sessions with 500 children in the pediatric orthopedic surgery ward at the Femme Mère Enfant Hospital in Lyon.



“ A nurse asks us to see a little girl who's in a lot of pain. She follows us. The little girl quickly starts to smile, then laugh. The nurse asks her about her pain, then, when there's no response, asks again. The little girl answers, 'Yes, it hurts, but not now.' ”

**Doctor Zeboulon**



“ I'm a clown, and sometimes life has some really beautiful surprises and lovely gifts in store! So it's a real pleasure to be able to share my gift with these children when life delivers them a blow. Laughter is like a muscle: it can atrophy if it isn't used. We're here to tickle that muscle and wake it up: we're the laughter therapists. ”

Adelaïde  
**Doctor Clown since 2010**

# Acquisition of medical equipment

The AREVA Corporate Foundation is helping acquire medical equipment for use chiefly in child healthcare.



“ I’m very pleased by this Franco-Mongolian cooperation. I hope that laparoscopy will continue to develop in all of the provinces. Equipment isn’t everything in surgery – training is extremely important, too. I greatly enjoy coming to these training sessions because of the interest shown by the surgeons and also the very warm welcome I always receive.”

Doctor Jacques Lagoutte  
**French digestive surgeon**

## Putting high-tech equipment in the hands of Mongolian surgeons

**In September 2013, the Actions Mongolie association donated laparoscopy equipment to the surgical and gynecological wards of Sainshand Hospital in Mongolia’s Dornogobi Province, with funding from the AREVA Corporate Foundation.**

**This high-tech equipment** is used to perform surgical procedures through micro-incisions in the abdominal cavity. The technique offers a number of advantages, including a shorter hospital stay for the patient, reduced risk of hospital-acquired infections, and less scarring and pain.

In addition to contributing equipment, the project offers a five-year training program for Mongolian doctors, enabling them to independently perform procedures. Dr. Lagoutte, a French digestive surgeon involved in developing laparoscopy in Mongolia, gave the first training sessions to local surgeons in the fall.

**5**  
**year training program**  
**to help Mongolian**  
**doctors independently**  
**perform surgery**







## France: better cancer treatment for children

**AREVA has sponsored Institut Curie since 2004, and supports its proton-therapy development program.**

**This targeted anti-cancer therapy is particularly well-suited to treating children** because it protects healthy tissues, thus minimizing the effects on young, growing bodies. After four years of renovation, the new Center for Proton Therapy in Orsay (CPO) – unique in France – has been providing treatment for a large number of children with cancer since 2010. It now treats close to 500 patients per year. The AREVA Corporate Foundation helped equip the anesthesia department and the children's recovery room. It also contributed to purchasing a medical imaging device. Children under the age of four can now be treated with general anesthesia, the only solution given the constraints of proton therapy for very young children. Proton therapy requires ultra-precise equipment positioning – within millimeters of the patient – and perfect immobility during treatment.

**In 2012, the Foundation renewed its commitment to the CPO for a three-year period by funding the acquisition of the following:**

- Optical systems and flat-panel detectors to extend the range of tumors treated, especially in children
- Computer software to enable extremely precise proton dose calculations, which can now be done outside the treatment room. This speeds up the process, making it possible to treat more people.



**“** *This ultra-precise form of radiation therapy enables very accurate targeting of deep-tissue pediatric tumors close to vital organs such as the optic nerve or certain parts of the brain. Children benefit the most because proton therapy protects at-risk organs, and reduces complications as well as the risk of a second cancer.”*

Doctor Sylvie Helfre  
**Radiation oncologist at Institut Curie**

### HEALTHCARE / OUR PARTNERS

Actions Mongolie / Croix-Rouge / Docteur Clown / François-Xavier Bagnoud / Institut Curie / Institut Pasteur / Joue-moi de la Musique / Mécénat Chirurgie Cardiaque / Public Health Association / Secours populaire français / Tête en l'air / Théodora

# Preventing illiteracy

The AREVA Corporate Foundation is strengthening its commitment to preventing child illiteracy.



## Reaching children and their parents

“2013 marked the year known as “Taking Action against Illiteracy – A Nationwide Goal,” which put the spotlight on illiteracy and accelerated regional initiatives by reaching out to those involved. The AEF program is a true example of these goals: it’s producing excellent results by boosting each family member’s confidence and self-sufficiency.”

Hervé Fernandez  
ANLCI Director

**The AREVA Corporate Foundation has been active in the prevention and fight against illiteracy since 2009. In 2012, the Foundation entered into an important two-year partnership with the French national literacy agency (ANLCI).**

**ANLCI developed the Actions Educatives Familiales (AEF) program**, which combines child illiteracy prevention with literacy tutoring for parents. The AEF program aims to help children perform better academically while supporting adults who have reading and writing problems.

By acquiring basic knowledge, adults who are also parents are better able to keep up with their children’s schooling. The Foundation sponsors the AEF program’s establishment in a dozen towns across France. In 2013, approximately 800 children and 600 parents, most of whom are mothers, benefited from this program.

**800**  
young people  
benefited from the  
Actions Educatives  
Familiales program



# Starting school dropout prevention as early as the first grade

**Apfée is a French association dedicated to promoting equal opportunities in school. Through the Coup de Pouce Clé program, it partners with French cities and the Department of Education to prevent early scholastic failure in young children.**

**The Coup de Pouce Clé clubs are designed for first-graders** who are poor readers and at risk of scholastic failure simply because they do not receive the after-school support they need at home. After regular classes, each club of five children and a coordinator meets four afternoons per week at the school. By creating the conditions necessary for success, the clubs aim to enable these children to overcome the critical reading and writing learning hurdles while helping them discover the joys of reading.

Parents also take part in these activities by participating in club activities and supporting their child at home on a daily basis. The goal is to give them the “keys” needed to keep up with their child’s schooling on a long-term basis. The AREVA Corporate Foundation has partnered with Apfée since 2010, and renewed its support in 2012 for a two-year period. During the 2013-2014 school year, approximately 265 children participated in 53 Coup de Pouce Clé clubs located across 10 different towns in France’s Manche, Gard, Vaucluse, Drôme and Rhône departments.

## 265

**young people participated in 53 Coups de Pouce Clé clubs during the 2013-2014 school year**



“Watching the session introduced me to new educational games and showed me how to complement the session with other at-home activities. My daughter seems to be able to express herself more easily thanks to the club’s positive group dynamics. I could see she really enjoyed participating in the session.”

**A mother**



## Learning through play

**The Apprenti’Bus program enables children aged 7 to 12 to participate in weekly workshops aimed at improving their reading, writing and verbal skills.**

**This educational and recreational program** takes place inside a completely renovated and classroom-equipped bus decorated in the Sport dans la Ville association colors. Every weekday from 5 pm to 8 pm, the Apprenti’Bus travels to various neighborhoods in the Lyon suburban area to serve children involved in the program. During the 2013-2014 school year, the AREVA Corporate Foundation funded the program, which supported 290 children in 10 neighborhoods across Lyon.





# Access to education

The AREVA Corporate Foundation actively participates in programs that provide access to education for the underprivileged.

## Brazil: educational activities for favela youth

**Compter sur demain** is a French association that partners with **Terr'Ativa**, a Brazilian association that works to prevent scholastic failure among youth and facilitate their socio-professional integration.

**100**  
young people  
benefited from  
homework  
assistance

It is the only association in the **Morro do Fuba favela**, located northwest of Rio de Janeiro. A five-person team provides scholastic support to approximately 100 children and youth, including homework assistance, educational and sports activities stressing culture and responsible behavior, medical follow-up, and counseling.

Acknowledging the key role parents play in their children's scholastic success, the association also values relations with families, particularly mothers. The AREVA Corporate Foundation is helping **Compter sur demain** to acquire and refurbish the house in which the educational activities for children take place.



## France: fostering young people's interest in science

In response to young people's waning interest in science and technology, six major companies, including the AREVA group, joined forces in 2006 to create the C.Génial Foundation, which raises science awareness among youth and enables them to discover science-related jobs.

To further this commitment, the AREVA Corporate Foundation pledged its support to the C.Génial Foundation in 2013 for a three-year period. The aim is to promote science and technology to students in junior and senior high schools.

The Foundation supports the following three initiatives:

- **Teachers in companies:** Held annually during Industry Week, this event gives secondary school teachers the opportunity to tour research and industry sites. As part of this initiative, teachers visited the nuclear facilities at AREVA's La Hague site.
- **C.Génial contest:** This annual contest selects innovative student-teacher team projects in science and technology.
- **Engineers and technicians in the classroom:** As part of this initiative, young engineers and technicians, including AREVA employees, speak at junior and senior high schools.



“ The discussions were great: the students had prepared a lot of questions with the teacher beforehand.”

Anne-Sophie B.  
AREVA employee

“ It was a very rich, interactive presentation, very different from an academic one. It gave students a useful perspective.”

Céline R.  
Mathematics teacher

## Helping the vulnerable in India

The AREVA Corporate Foundation has been working with the Asie Tana - Inter Aide (ATIA) association since 2010, supporting an early-learning program for small children (up to 6 years of age) to fight educational marginalization in India's Pune and Bombay slums.

The project's purpose is to improve the children's chances for success by offering support at an age when a child's learning and socializing capacities are just beginning to develop. The program uses early-learning activities and at-home visits to help parents understand the importance of their children's development. In 2013, more than 900 families and approximately 1,200 children participated in the program, thanks to the Foundation.





# Student support

The AREVA Corporate Foundation fosters equal opportunity by providing students from modest backgrounds with financial support for their studies in France.



“ A lot of young people are hampered by insufficient funds, lack of confidence or family support, or because they simply don't know about the curriculum requirements. Through financial support from large companies and private individuals, the Foundation helps them develop their talents by cultivating determination, responsibility and a sense of common good.”

Françoise Besse  
Fondation Georges Besse

## Promoting careers in engineering

**The Fondation Georges Besse helps top science students with serious financial difficulties pursue their engineering studies.**

**Every year, the Fondation Georges Besse** provides personalized financial aid to approximately 20 new students, based on need and resources. It also renews aid to previous grantees who are still pursuing their engineering degree, following an in-depth review of their personal situation.

Since 1987, more than 500 grantees have benefited from this type of support. The AREVA Corporate Foundation has been funding student scholarships since 2012.





## Student scholarships or...

23

**students received  
financial assistance**

**The Frateli association gives young people from modest backgrounds the means to successfully complete their higher education by setting up a mentoring program with young professionals, along with suitable support programs.**

Since 2004, the association has been setting up and monitoring mentorships between young honor-roll students on scholarship and young professionals who followed similar academic paths. In 2013, the AREVA Corporate Foundation funded scholarships for 16 students. The group's employees volunteered to mentor the young students until they found their first job.

## ...housing subsidy grants...

**The Tremplin association helps young people from modest backgrounds pursue long-term higher education.**

**Most of the students sponsored by the association** are in pre-engineering science programs. Tremplin provides students with housing subsidy grants, which enable them to pay for a room in a dormitory or other accommodation near their school. The AREVA Corporate Foundation has been working with the association since 2010, and in 2013, the Foundation funded housing subsidy grants to seven Tremplin-sponsored students. AREVA employees also share their experience as volunteer mentors to other Tremplin-sponsored students who are in a pre-engineering program, studying science in a university, or already enrolled in an engineering school.



## ...with the support of AREVA mentors

**Mentors help their sponsored youth develop their capabilities and achievements while facilitating their professional integration.**

**Immersed in a new sociocultural and academic environment**, the mentee receives moral support and advice on how to adapt and develop social skills.



“ I've mentored Adrien for two years, starting from his pre-engineering program to his first year now at an engineering school. We talk about many subjects: problems with pre-engineering courses, the competitive entrance exam, choosing schools, thoughts on job orientation, and more. I share my personal experience, and together, we try to find answers to his questions. For me, mentoring is a wonderful, mind-opening experience. The way I see it, volunteering promotes respect, commitment and generosity, all of which are values that seem essential to me in a company like ours.”

Sophie Missirian  
**AREVA employee and mentor**

### EDUCATION / OUR PARTNERS

Asie Tana - Inter Aide / C.Génial / Compteur sur demain / Espace Bénévolat / François-Xavier Bagnoud / Frateli / French national literacy agency (ANLCI) / French association for equal opportunities at school (Apfée) / Fondation Georges Besse / Sport dans la ville / Tremplin / Un Avenir Ensemble

# Access to culture

The AREVA Corporate Foundation sponsors cultural outreach actions for members of the public with little access to culture.

## Promoting culture outside museum walls



The AREVA Corporate Foundation is partnering with the Musée du quai Branly on an innovative cultural outreach initiative known as “roaming exhibitions.”

“The museum and its staff are inspired by the belief that cultural institutions must be creative and inventive in improving access to culture for all while meeting new audiences within their local communities.”

Stéphane Martin  
Musée du quai Branly Director

Last spring, the town of Cergy-Pontoise in the Paris Region hosted the first phase of this extramural program, attracting more than 6,000 participants. Created in close collaboration with local governments, these roaming exhibitions provide new audiences with the opportunity to experience the museum's collections and cultural offering, which are made available within their local community and based on enriching, universal topics. Activities include family workshops, story time, exhibitions, art installations, theme-based conferences, special evenings, and open-air film screenings. Each Sunday, Cergy-Pontoise's residents can take advantage of a free shuttle service for transport to the off-site museum, thereby enabling them to explore the activities and forge lasting relationships. Building on the success of the first roaming exhibition, the Musée du quai Branly and the AREVA Corporate Foundation will continue the initiative in Clichy-Montfermeil in autumn 2014.

6,000

people participated in the first roaming exhibition



## From art workshops...

**The Orange Rouge association promotes access to arts education by organizing meetings aimed at developing a joint-artistic project between artists and young people with learning difficulties.**

**The organization calls on recognized artists, and combines an artistic and educational approach. Orange Rouge operates in junior high schools located mainly in underprivileged, isolated or suburban neighborhoods, and works with youth who have learning difficulties, or emotional and psychological problems.**

Each workshop consists of 40 hours of work with groups of 25 students over a period of 2 to 8 months during the school year. The Foundation sponsored 10 workshops during the 2012/2013 school year, and is currently sponsoring an additional 10 for the January-June 2014 period. An exhibition of the works created during the 2013 workshops was held in Paris from February to March 2014.

# 250

**young people participated in artistic projects**



► Young people, accompanied by Orange Rouge during a Musée Guimet visit in January 2014.

## ...to cultural outreach

**The AREVA Corporate Foundation shares the Musée Guimet's desire to facilitate access to culture for a broader audience, and is sponsoring educational activities that take place in the museum.**

**Training sessions are thus offered to social workers.** Following successful completion of training sessions, they are invited to return with the children they supervise for a self-guided tour, which is enhanced with help from a guide booklet. In 2013, 250 social workers received training sessions on a broad range of topics, including India, Cambodia and the Silk Roads. Workshops are also organized for youth and their families on current events, including the Angkor exhibition in 2013.

# 250

**social workers trained**

### CULTURE / OUR PARTNERS

French Institute / Musée Guimet / Musée du quai Branly / Orange Rouge



# Employee involvement

The AREVA Corporate Foundation encourages and supports the initiatives of group employees who are already volunteers or who wish to become involved in solidarity projects.

## 41 **Call for internal projects**

projects  
selected by  
the Foundation  
since 2010

Since 2010, any AREVA employee who already volunteers in an association may ask the Foundation to support a cherished project to which he or she is committed to sponsoring.

The project must meet several criteria, including facilitating access to healthcare, education or culture for underprivileged children. It must also be carried out in a country in which the group is present. In 2013, the Foundation supported and monitored the progress of 18 projects sponsored by American, German and French employees.



### A kindergarten in Niger: constructing a new classroom

“For the past five years, active members of the SAHEL association, including several volunteers who are also AREVA employees, carried out the project. Thanks to the work they accomplished, the new unit can now welcome 50—instead of 32—underprivileged children from the Arlit community.”

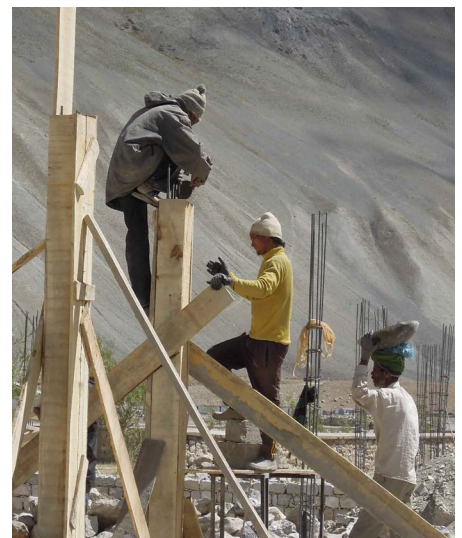
Emmanuel Fesquet  
AREVA employee, France



### A primary school in India: equipping seven new classrooms, a library and a cultural expression room

“It’s gratifying to have been able to bring about such a project alongside the AAZ association and the parents, who actively contributed to the project. Thanks to this show of solidarity, we’re helping to improve conditions for 500 children at this school, which is located in an isolated region and has been left out of India’s economic boom.”

Nicolas Dubecq  
AREVA employee, France



# AREVA employees running for solidarity



“ This project represents a major contribution from HED Tamat and its partners in meeting the challenge to step up school enrollment in nomadic regions. The enrollment rate for children has considerably increased this year, no doubt because school offers vital support and the school cafeteria provides children with at least two meals per day.”

Seidi Houmoudan  
Nigerien NGO HED Tamat representative

For the fourth year, AREVA is rallying employees around the AthleWorldTour sports challenge to benefit a cause sponsored by the AREVA Corporate Foundation. The AthleWorldTour encourages employees to run and add up the kilometers they run both individually and during races organized by the group's sites.

With more than 400,000 kilometers logged in 2013, the goal was exceeded. The worldwide turnout of employees enabled the Foundation to confirm its commitment to a unique project that supports underprivileged children in Niger, in partnership with the Secours populaire français association and its local partner HED Tamat. This scholastic program in 10 primary schools is helping to improve living and working conditions for more than 600 children in the Agadez region, which is mostly populated by nomads and in which the school enrollment rate is still low.

The project made it possible to:

- set up 10 school cafeterias,
- provide equipment, sports kits, school uniforms and supplies,
- provide herds of milk goats,
- open a literacy center in each school,
- train 25 teachers.

**7,500**  
AREVA employees  
mobilized since 2010  
in 14 countries at  
65 of the group's sites

**760,000**  
kilometers logged since  
2010, equivalent to  
19 times the Earth's  
circumference



## EMPLOYEE INVOLVEMENT / OUR PARTNERS

AAZ / AB / A Bras Ouverts / Académie François Bourdon / Academy of Children's Theatre / Cool Girls / Down Syndrome Association of Greater Charlotte / German-Russian culture club "Brücken e.V" / Girls on the Run / Habitat for Humanity / ISE Airikkala-Penttala / Les Rameaux Verts / New Vistas School / Planète Urgence / Richmond County Orchestra Booster Club / Ronald MacDonald House / SAHEL / Saskatoon Road Runners / Secours populaire français / Washington Elementary Chess Champions

AREVA is a world leader in nuclear power. The group's offer to utilities covers every stage of the nuclear fuel cycle, reactor design and construction, and operating services. Its expertise and uncompromising dedication to safety make it a leading industry player. AREVA also invests in renewable energies to develop, via partnerships, high technology solutions.

Through the complementary nature of nuclear and renewables, AREVA's 45,000 employees contribute to building tomorrow's energy model: supplying the greatest number of people with energy that is safer and with less CO<sub>2</sub>.

**[www.aveva.com](http://www.aveva.com)**

**TOUR AREVA**

**1, place Jean Millier, 92084 Paris La Défense Cedex**