



**PRESS KIT**

June 2012

# **AREVA Foundation**

## **Commitment and Action**

**PRESS CONTACT**

Pauline Briand

Tel: + 33 (0)1 34 96 12 93





## Message from the Chairman



**Luc Oursel**

*Chief Executive Officer of AREVA  
President of the AREVA Foundation*

AREVA's approach to societal responsibility is one of partnership based on listening and solidarity. These values guide our commitment and led to the establishment of AREVA Foundation in 2007.

Through its multiyear programs, the Foundation is contributing to the civil society needs by supporting public interest activities, forging long-lasting partnerships with local players near our industrial plants, and fostering involvement by the group's employees.

Over its five years of existence, two fields became obvious: Health and Education. This is reflected in our actions in the field – access to healthcare and illiteracy prevention, for example – in favour of the most disadvantaged, including children, whether in France or in countries where vital needs are not met. Research is also a central component of our

action, with support for research programs on two major scourges: HIV / Aids and malaria.

Our commitment to Health and Education, where so much remains to be done, is still firm. The new term is an opportunity to strengthen our partnerships for the long haul by maintaining a concrete, pragmatic, field-oriented approach. We have decided to add Culture to our philanthropic actions. Its accessibility and universality are a natural fit, and the group has been active in this field since its inception.

Last but not least, we want to give even greater impetus to employees involvement by renewing and reinforcing programs designed to give them opportunities to volunteer as an expression of their commitment.



- **AREVA Foundation extended for 5 years**
- **Presentation of the Foundation**
- **Key facts 2007 > 2011**
  - Health
  - Education
  - Employees involvement
- **Our partners**

## AREVA Foundation extended for 5 years

Having reached the end of its first five years of operation, AREVA Foundation has been extended by the Group's Executive Board for another five years.

AREVA Foundation was founded in 2007 to underpin the Group's societal commitment and its policy of community involvement in countries in which it operates. Focused on solidarity and public interest projects, it supports concrete, targeted and sustainable actions benefitting the disadvantaged, with priority given to children, women and students.

Adding to its trailblazing programs in the fields of Health (combating Aids and malaria in particular) and Education (most notably the fight against illiteracy), the Foundation adds the new line of the access to culture for the disadvantaged.

AREVA Foundation endeavors to involve the Group's employees in its programs by inviting them to propose projects, sponsor scholarship students or go on humanitarian missions abroad.

During the first meeting of the renewed Board of Directors held on May 24, 2012, twenty-three projects were approved: thirteen in Education, six in Health and four in Culture. Most of the projects will be deployed in France, but also in India, Niger or South Africa.

The selected projects include:

- a new partnership with the French national agency for the fight against illiteracy to develop a major program in France;
- an extension of the eight-year partnership with the Curie Institute;
- a new cultural partnership with the *Musée du quai Branly* on "an extramural project" for widespread access to culture.

In addition, the 2012 program to involve employees, representing 20% of the Foundation's annual endowment, was approved.

AREVA CEO and Foundation President Luc Oursel, announced: "we are convinced that the growth of our operations must take place in a setting of true social responsibility. Our Foundation's action contributes to our commitment to sustainable community involvement through programs of support for those who need them most. I thank our partners and our employees, who are turning out in growing numbers to help us implement solidarity projects."

\*\*\*

To celebrate this new commitment, Luc Oursel and his guest of honor, Mrs. George Pau-Langevin, Deputy Minister of National Education in charge of Educational Success, will invite partners and Group employees involved in the Foundation's projects to Paris headquarters at rue La Fayette on Wednesday, June 27, to talk about their experience. Two of them will provide illustrations of the actions supported by AREVA Foundation: Dr. Olivier Schwartz, head of the Virus and Immunity Research Unit at the Pasteur Institute, and Hervé Fernandez, Director of the French national agency for the fight against illiteracy.



# Presentation of the Foundation



AREVA Foundation, established in 2007, supports humanitarian and public-interest projects underpinning the group's commitment to society and community involvement in countries in which it develops and conducts business. The Foundation supports concrete, targeted and sustainable actions in priority to the underprivileged, especially to **children, women and students**. These actions focus on three action fields:

## Health

- **Fighting against AIDS and malaria**, both through research and in the field
- **Access to healthcare** for disadvantaged people
- Acquisition of **medical equipment**

## Education

- Fighting against **illiteracy**
- Access to **education**
- **Student mentoring**

## Culture

- **Access to culture for the underprivileged**
- **Heritage and cultural influence**

AREVA Foundation rallies the group's employees around these actions through projects designed especially for them, including calls for **internal projects, volunteering opportunities, humanitarian missions and mentoring of young students**.

AREVA Foundation has been allocated 7.5 million euros for its second 5 years' term.

## Governance

### Board of Directors

The Board of Directors of AREVA Foundation consists of six members from among two outer personalities and a representative of AREVA employees. It is chaired by the CEO of the AREVA group, Luc Oursel, and meets at least twice a year. Its role consists in approving the budget, in appreciating the led initiatives and in proposing new orientations.

### The Foundation team

The Foundation has a team delegated with four permanent persons. Its role consists in managing partnerships and in preparing the new orientations to propose to the Board of Directors. In this context, the team examines the projects and follows their performance; it manages the budgets and assures the interface between the Foundation and its current or potential partners.



## Eligibility criteria

### For the project

Co-responsible, in the public interest, and **not for profit**

Falls within one of the AREVA Foundation's three fields of activity: **health, education or culture**

**Located in a country in which the group is based**, preferably near an AREVA site.

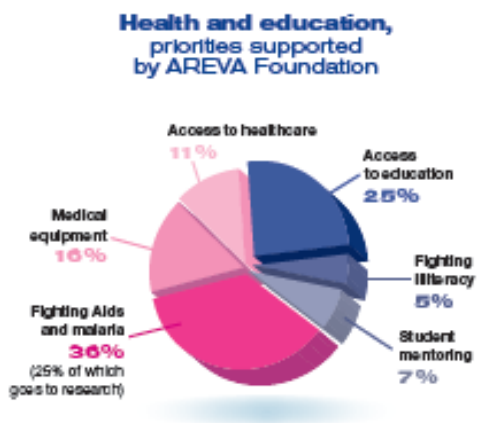
### For the association

Organized as an association, an NGO, a foundation or any **Non-political and non-denominational**

In existence for a minimum of **three years**.

## Key facts 2007-2011

Since its establishment, AREVA Foundation supported **105 projects** in **14 countries**, including **46** projects involving the group's employees.



The Foundation widely stressed its efforts in the field of Health, and more particularly in the research, by signing several major partnerships with the Institut Pasteur dedicated to the research on AIDS and malaria.

The Foundation also attempted in the field of Education, to reinforce its actions for the access to the education of the most disadvantaged. It is in particular committed to strengthen its partnerships in the fight against illiteracy.

The Foundation also emphasized the employees' involvement through three programs which are dedicated to them:

- AREVA Solidaires, a call for internal projects,
- AthleWorldTour, sports challenge for the benefit of the fight against illiteracy,
- Humanitarian missions,

and bringing the part of the budget dedicated to the projects of the employees up to 20 % in 2011.

## Health



### Research on infectious diseases

AREVA supports the Institut Pasteur for research on infectious diseases. Whether in Shanghai or in Paris, AREVA Foundation finances programs devoted to the fight against AIDS, and in particular to the study of the transfer mechanisms of the virus and its effects on the organism, as well as to suitable treatments for patients infected since childhood. In Niger, research focuses on malaria, with the goal of improving diagnoses and monitoring the effectiveness of treatment.

“There are 25 to 30 million people infected with the Aids virus in the world today. Each year, there are 2 to 3 million new cases – 7,000 per day. AIDS is still the most fatal virus in the world. Will there be a vaccine? A lot of people are asking that question. We know that, in some species of monkeys, we can control the infection and prevent the virus from appearing. So there are promising candidate vaccines that work, and that’s really important. They are not yet usable on people, but I feel that there are many reasons to be optimistic.”

**Professor Olivier Schwartz** Head of the Virus and Immunity Research Unit, Institut Pasteur



### Advanced technology to fight cancer



AREVA Foundation has been a faithful sponsor of the Institut Curie and its Center for Proton Therapy in Orsay (CPO), and renewed its commitment in 2009. It supports a development program for proton therapy, a **targeted anti-cancer therapy**, and financed new high-tech equipment. This precision therapy is particularly beneficial to children because it protects the organs and tissue around the tumor, thus minimizing the effects on growing young bodies. This partnership was strengthened through the donation of skills. AREVA experts provided organizational consulting services to prepare the CPO for a vast transformation of the Center, which now receives **more**

**than 400 patients per year.**

“Since 2004, AREVA has supported the Institut Curie and the development of proton therapy in France. This advanced technology is the descendant of a historic nuclear physics accelerator, the synchrocyclotron, built in 1954 at the initiative of Irène and Frédéric Joliot-Curie. Going from a particle accelerator to the treatment of cancerous tumors could not be a better example of living better through advanced technology and a human experience full of meaning for AREVA.”

**Hélène Bongrain**, Directeur du développement des ressources, Institut Curie



## Dreams and smiles for hospitalized children

The Théodora association offers hospitalized children a little bit of comfort and a moment of relaxation **with clowns trained to work in the pediatric wards of a hospital environment**. Doctors Drag-onfly, Doodle and Suchapoet go to children's rooms to help them get back their happy-go-lucky attitude. AREVA Foundation has been a partner since 2010 and increased its support in 2012 to include visits of these "Dream Doctors" to **the orthopedic surgery and intensive care units of Robert Debré hospital in Paris**.



"The only rule is to listen to the children and to get them to trust you without forcing them. There are a thousand ways to communicate with them: you can pretend to be shy, talk to their teddy bear, blow bubbles or sing."

Says Dr. Dreams

## Model villages based on community self-help



"Village-FXB" is a three-year **community development** program led by the François-Xavier Bagnoud association. **Its goal is to improve the lives of poor children and adults infected with or affected by HIV/AIDS**. It includes a comprehensive program of assistance for **health, nutrition, hygiene, education and the protection of children's rights, along with economic support** to help move families towards self-sufficiency in three years. After supporting a village in India, AREVA Foundation is now providing support to a village of 100 families in the Bu Tuo district of China.

The strength of Village-FXB lies in its integrated approach and in personalized support for its beneficiaries, whom I prefer to call 'participants'.

Says Albina du Boisrouvray, President of the FXB association

## When medicine closes the distance

In Canada, **St. Paul's Hospital Foundation** offers a "telehealth" program for patients who are **isolated and suffering from renal disease**. For the past ten years, renal disease, and in particular diabetes leading to chronic pathologies, has been rising in Saskatchewan Province. Access to health-care is difficult for these patients due to the rugged climate and the distance to treatment centers. AREVA Foundation supports **a program that offers consultations** with nephrology specialists to people who live in remote locations through video conferencing, followed by aid for **healthcare and advice for prevention** in their communities.

# Education



## Helping children pull themselves out of the slums

Inter aide is an NGO that has specialized for more than 30 years in development projects for the most destitute. Its objective is to give beneficiaries the ability to be self-supporting over the long term. AREVA Foundation is supporting an **early learning program** for children aged 0 to 6 and their families to fight educational marginalization in the slums of Pune and Bombay, India. The project’s objective is **to improve children’s chances of success** by getting involved at an age when the child’s learning and socialization abilities are developing.



“Traditionally, in India, the father is not very involved in the education of the little ones. A special effort was made to include more fathers in the early learning sessions. Since they are often absent during the day, house calls before and after the sessions were conducted at suitable hours (before or after work) so that they could be present.”

Says Uma Panse, head of the early learning program in Pune

## The Foundation and employees unite to support students



The Frateli and Tremplin associations have been working for nearly 10 years with **young students from modest backgrounds**. Their objective is **to uncover these students’ talents** by giving them tools, methods and access to the network. AREVA Foundation supports **15 high achievers** who have chosen to pursue scientific studies by giving them scholarships and housing assistance. But beyond these financial supports there is also the human element: **the volunteer mentors** who provide support to these young people. AREVA’s employees are committed to this mission and are involved in their mentees’ efforts all the way up to their first job.

« Tremplin was with me during my studies and paired me with a lady mentor who is an engineer with AREVA; I also received advice from a number of tutors and financial aid for my lodging. Later, I would like to help students, too, especially young girls who still hesitate to go into the fields of science. »

What a mentee has to say

« Getting good grades isn’t enough to guarantee easy access to the working world for young people from very disadvantaged neighborhoods. Through Frateli, I offered to be a mentor to Géraldine to help her take the steps I had to take when I was her age: preparing for the competitive entrance exam, writing a résumé, preparing for interviews and making the choices you have to make when you’re a student. »

What an AREVA employee mentor has to say

## Giving Chinese students resources for learning

The Secours populaire français (SPF) participated in the project to **rebuild a school in China** following the 2008 earthquake in Sichuan province. AREVA Foundation was involved in the project by providing funding **for the school's furnishings and fittings, and buying several thousand books, including e-books, and modern learning tools.**

« Our teacher taught us a Chinese proverb: 'studious work is the only path in the mountain of books'. But I had no idea what the mountain of books meant. It was only when I entered the new documentation center that I understood for the first time that it was a mountain of books, and I realized that the books in my back pack were only little stones of the mountain. »

**Testimonial from the student representative of the school during the inauguration of the documentation center on December 15, 2011**

## Taking action at an early age to prevent illiteracy

AREVA Foundation believes it is important to give young people a taste for reading, writing and arithmetic and for expressing themselves so that they can shape their own future. And that is why it fully supports **the fight against illiteracy**. Continuing a partnership initiated in 2010 in the Rhone-Alps region of France, the Foundation has chosen to support Apfée, an association that promotes equal opportunity in the schools, which offers **recreational workshops that give young people a love of words** and a solid basis for learning, and **that get the parents involved**. AREVA Foundation is providing support to **85 primary school children** in the 18<sup>th</sup> arrondissement of Paris.

## Developing a taste for reading in the very young



AREVA Foundation is providing support in the United States for **the donation of books to the very young**. The books are distributed in hospitals and healthcare centers by the Reach Out and Read association (ROR), giving children from 6 months to 5 years old **a love of books and stimulating early learning** to reduce the difficulties of learning to read. The three main actions are:

- to encourage parents to read with their children every day,
- to give each child a book appropriate to his or her development level,
- and to hold reading sessions with the family and ROR volunteers during a hospital stay or a visit to the pediatrician.

## Employee involvement



AREVA Foundation is developing solidarity projects dedicated to the group's employees.

### Proposing and leading a solidarity project

In 2010 and 2011, AREVA Foundation launched **AREVA Solidaires**, a call for projects among the Group's employees in France who volunteer in solidarity associations. It will open the call for projects to employees in the United States and Germany in 2012. During the first two years of the program, **more than 80 applications were received, and 23 of them were selected for support from AREVA Foundation**. Examples:

#### Reading to grow

Created in 2007 in Clamart, the Petite Bibliothèque Ronde wants to **facilitate learning for young people** with little access to books for cultural and social reasons, and to become a local player in the neighborhood. By promoting reading, the association is becoming a **link for social insertion for some 6,000 children** aged 6 to 14. AREVA Foundation funded **the purchase of books and albums** for a workshop that helps children having learning difficulties.

#### Guiding women from the favelas towards self-reliance

The Amis des Enfants du Monde association **helps children in distress** all over the world. AREVA Foundation is supporting it by funding **training for adults as educators** of young children in the community nurseries of the favelas near Rio de Janeiro, Brazil.

The training focuses especially on the **women of the favelas** who dropped out of school at an early age due to distance and economic problems. For them, these courses represent a real victory.

### Running to fight illiteracy

For three years, AREVA Foundation has laid down a sports challenge for the Group: **the AthleWorld-Tour**. How does it work? Group employees run for projects to fight illiteracy, adding up the kilometers logged on their own or during events held at their sites. Each year, the goal has been largely exceeded: in 2011, 233,216 km were logged, well above the goal of 150,000 km. **The strong turnout** on every continent enabled the Foundation to support **10 projects led by associations** fighting illiteracy. Example:

#### Fighting illiteracy to banish exclusion

AREVA Foundation is supporting **training for illiterate adults in the Dornogobi region of Mongolia**. The two-month sessions are organized by the NGO Orgiluun Ertunts, which exists solely to fight illiteracy. The classes are held in Ulan Bator, the capital, to remove the adults from their environment, where



their handicap is often stigmatized. Throughout the training, they receive meals and lodging at the association's boarding home.

## Joining personal skills with involvement

Every year, AREVA Foundation allows some 20 employees **to go to Africa or India on a humanitarian mission** for 2 weeks. These missions are carried out on the employees' own time and are known as "solidarity leave".

« The children were always there, full of enthusiasm and smiles, proud to take our classes. And of course I think of them still, hoping that I've given them the desire to continue learning, to hang in there when there are 70 other students in the classroom. They're so determined, so in need of books, of stories, that I hope other volunteers will follow to carry on this work. One thing for sure is that they gave me a lot! »

**Testimonial from Emmanuelle,  
who supported a school in Benin in 2011**



## Main partners

**AREVA Foundation thanks all its partners for their actions in the field and their involvement for more solidarity around the world.**

### **HEALTH**

Institut Pasteur  
Institut Curie  
Croix Rouge française  
Dominique Lapierre  
François-Xavier Bagnoud  
Institut du Cerveau et de la Moelle épinière  
Mécénat Chirurgie Cardiaque  
Sidaction  
Théodora

### **EDUCATION**

Apfée  
Agence Nationale de lutte contre l'illettrisme  
Inter Aide  
Secours Populaire français  
Tremplin  
Frateli  
Un Avenir Ensemble

### **CULTURE**

Musée du quai Branly  
Musée Guimet

### **EMPLOYEE INVOLVEMENT**

Planète Urgence

AREVA supplies solutions for power generation with less carbon. Its expertise and unwavering insistence on safety, security, transparency and ethics are setting the standard, and its responsible development is anchored in a process of continuous improvement.

Ranked first in the global nuclear power industry, AREVA's unique integrated offering to utilities covers every stage of the fuel cycle, nuclear reactor design and construction, and related services. The group is also expanding in renewable energies – wind, solar, bioenergies, hydrogen and storage – to be one of the top three in this sector worldwide.

With these two major offers, AREVA's 48,000 employees are helping to supply ever safer, cleaner and more economical energy to the greatest number of people.

[www.aveva.com](http://www.aveva.com)