



The MANUELA™ handheld metrology and radiological mapping tool

What is MANUELA™?

The Mobile Apparatus for Nuclear Expertise Localization Assistance, or MANUELA™, is a handheld tool used for simultaneous 3D measurements for metrology and radiological mapping of nuclear facilities. Using a 3D reconstruction of an existing environment, radiological measurements such as dose rate and gamma spectra of emissions performed by an Orano operator are precisely positioned. The MANUELA™ identifies the location of hot spots, their characteristics, and the intensity of gamma radiation within the areas of measurement.

What is MANUELA™ used for?

Once Orano collects and analyzes the data, it is presented to customers for the decommissioning team to better understand the physical arrangement of an area. This allows for a viable technical approach to be developed to address the source term contained in the system, structure or component.

In addition to a spatial orientation of the area of concern, accessibility issues can also be addressed concurrently to facilitate the installation of scaffolding, removal of grating, or other job site preparation needed to safely and efficiently remediate the source of the activity in an ALARA manner.

Capturing detailed radiological survey data is an essential function in detailed ALARA planning, developing remedial action plans and demonstrating compliance to clean

Our services

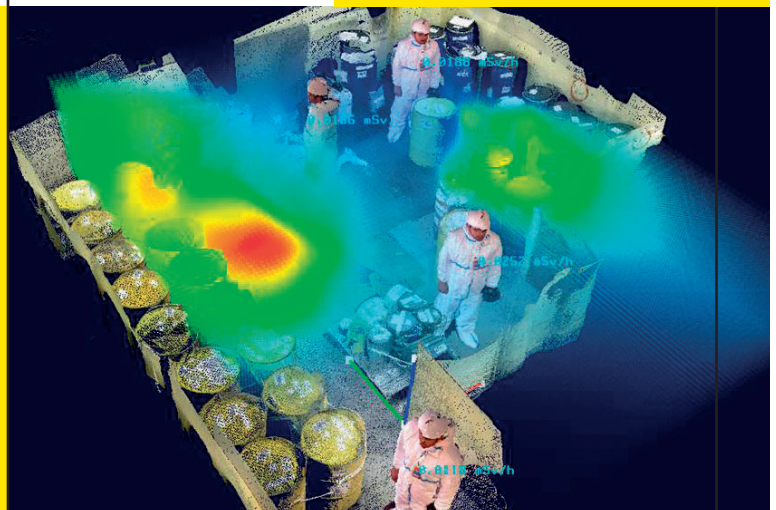
- Radiologic and dimensional scans conducted on your premises by an experienced team in close collaboration with your own team

Results

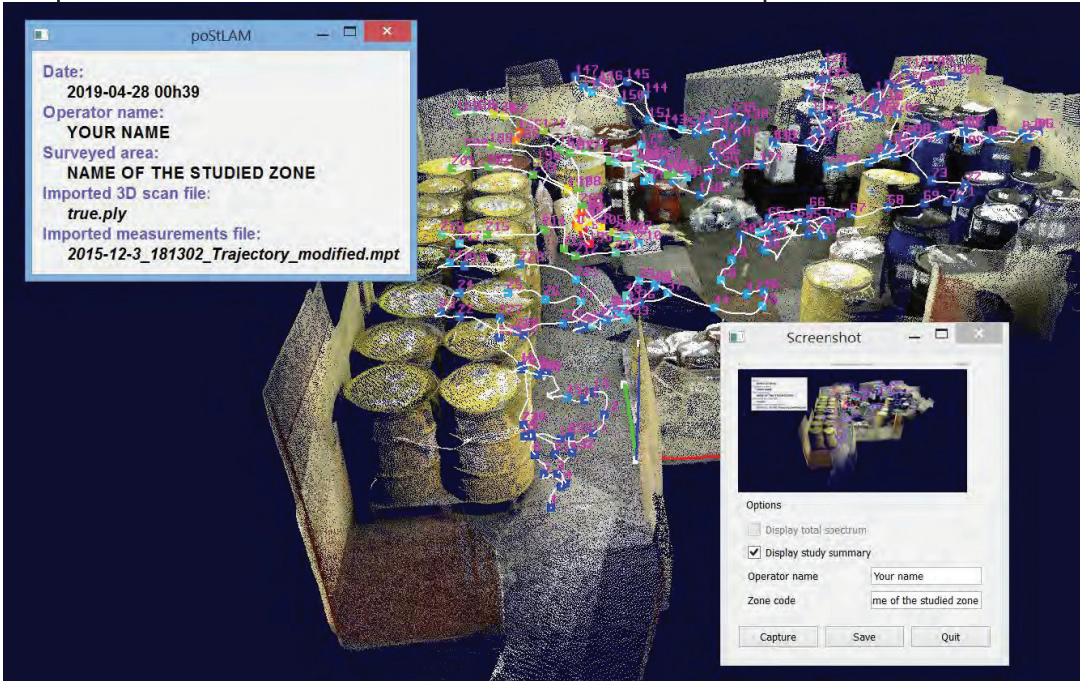
- Provides exact radiation dose rate data at precise points in space that are detailed and reproducible

Useful for

- ALARA planning during facility operations
- Scoping and site characterization during the D&D planning phase
- Remedial action support during active decommissioning work
- Final status survey and demonstration of end state compliance for license termination



MANUELA™ provides exact, detailed and reproducible radiation dose rate data at precise points in space



Key benefits of MANUELA™

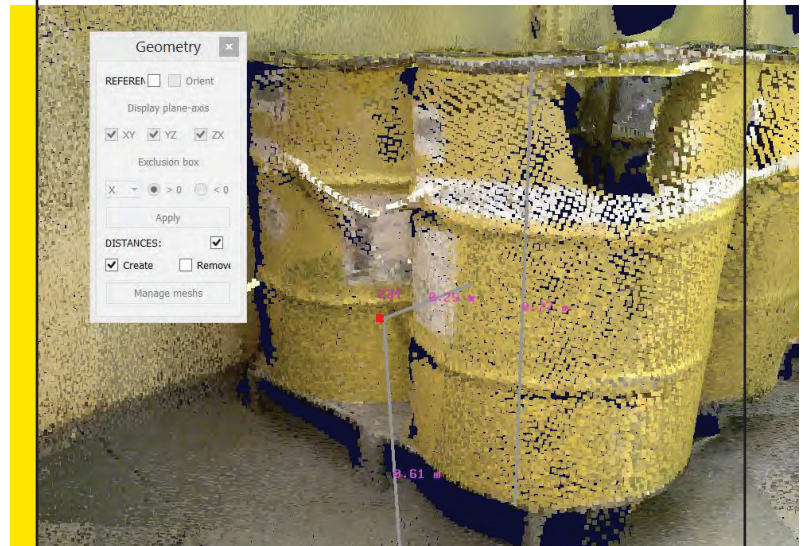
- Simultaneous 3D radiological and topographical mapping
- Positioning of measurement points in the 3D environment as real
- Visualization of radiological hot spots and radiation intensity distribution
- Spatial identification of location of irradiation sources and characteristics

up criteria. MANUELA™ provides exact radiation dose rate data at precise points in space that are detailed and reproducible.

MANUELA™ can be used throughout the decommissioning process to validate progress and continue to refine the work activities to optimize the efforts of the crew, which reduces downtime while waiting for survey results, whereas traditional survey methodology relies on a physical survey to be performed and the data transcribed onto survey maps that are only two dimensional. The traditional format tends to be inaccurate and difficult to interpret the precise location(s) of hot spots or generalized dose rates.

MANUELA™ also compiles all of the relevant survey data into a downloadable table format which includes the measurement identification number, time stamp, point space location on the XYZ plane, and the dose rate value.

Dose points are indicated along the scan path that provide exact locations and dose rates at specific points in space



Virtual telemetry tools

Anthony Chang

Orano
10101 David Taylor Drive
Suite 200
Charlotte NC 28262

+1 704 805 2851
anthony.chang@orano.group